

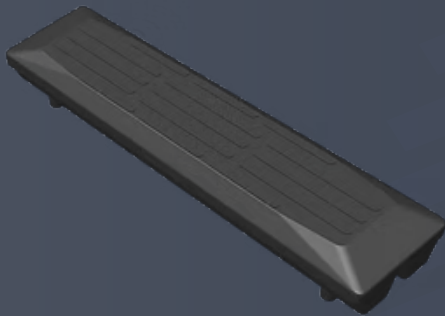
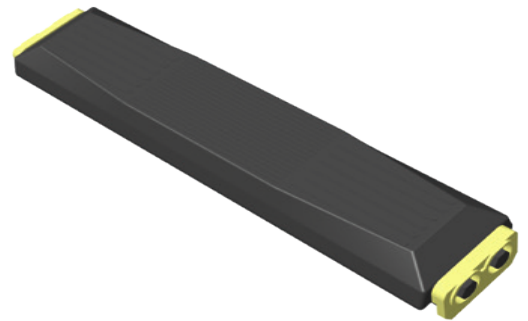


REINFORCED RUBBER TRACK PADS

CLIP-ON STYLE

Clip-on pads attach directly to the steel chain using clips. This method is quick and easy, allowing for rapid installation and removal.

Application: Ideal for operators who need to frequently switch between different types of pads depending on the job requirements.



BOLT-ON STYLE

Bolt-on pads are secured to the steel chain using bolts. This method provides a more secure attachment, ensuring the pads stay in place even under heavy loads.

Application: Offers a durable and reliable solution for long-term projects where the pads will remain in use for extended periods.

CHAIN-ON STYLE

Chain-on pads are integrated directly into the steel chain, offering the most robust and permanent attachment method.

Application: Provides maximum durability and stability, making them ideal for heavy-duty applications where pad longevity is critical.



FROM 200MM TO 800MM
PADS FOR THE MAJORITY OF MACHINES

**ENGINEERED FOR A VARIETY OF
CONSTRUCTION APPLICATIONS**



(847) 488-0988
INFO@GLOBALTRACKWAREHOUSE.COM

WWW.GLOBALTRACKWAREHOUSE.COM

GT PADS FEATURES AND APPLICATIONS

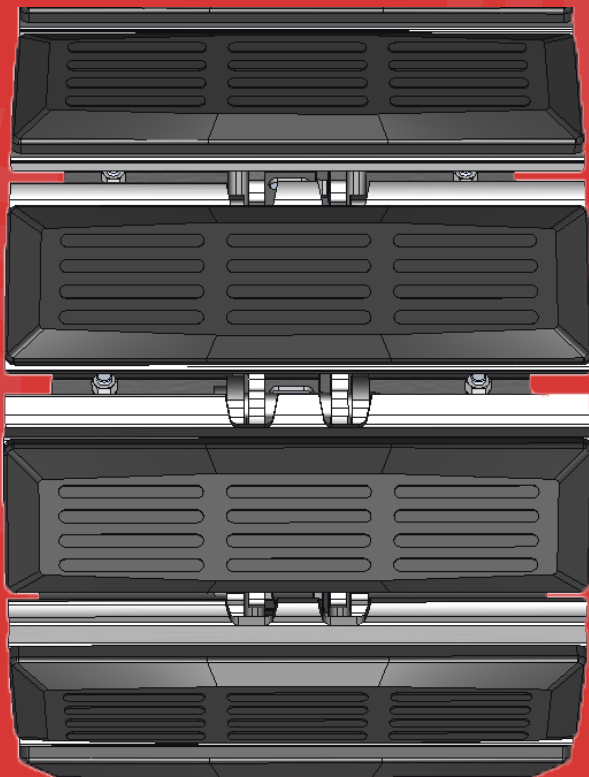
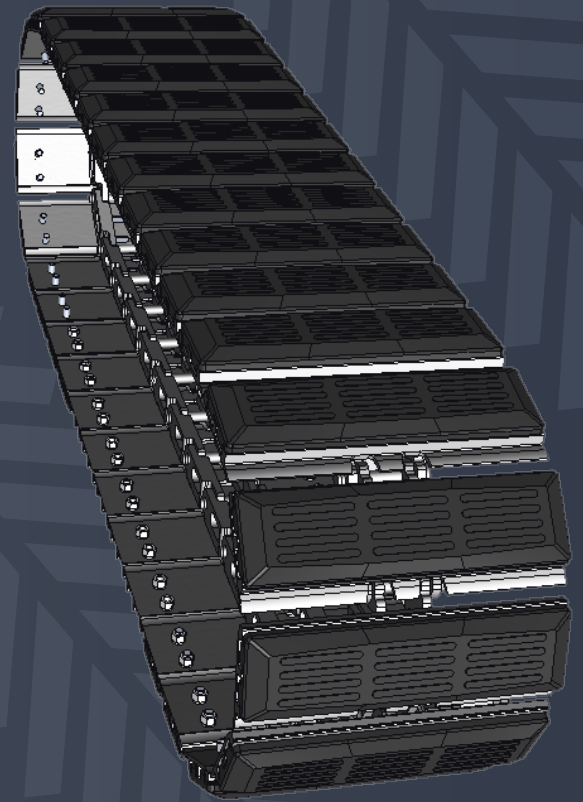
Surface Protection

The pads are designed to shield hard pavements and sensitive surfaces from damage caused by mini excavators.

Application: Ensures that expensive surfaces like concrete, tiles, and pavements are preserved, reducing the risk of costly repairs and maintaining the visual appeal of the project site.

Core Features

The cores within the GT Pads Series are made of either premium Boron forged steel or Stamped high strength, low Carbon steel, ensuring unmatched structural integrity. Our pads are also precisely designed to be direct replacements of OEM pads, minimizing installation time.



Compound Durability

The compound used in the GT PADS Series is formulated for exceptional wear resistance while maintaining flexibility.

Application: Extends the lifespan of the pads, reducing the frequency of replacements, and ensuring they can withstand demanding construction environments.

Adhesion to Steel Core

GT Pads are engineered to adhere optimally to the steel core, preventing delamination under extreme conditions.

Application: This strong adhesion increases the reliability of the pads, ensuring they perform consistently without separation, which can lead to downtime and increased maintenance costs.