



GLOBAL TRACK WAREHOUSE



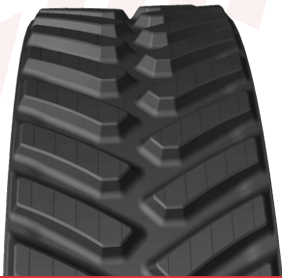
NXT AGRICULTURE SERIES

Precision Engineered Tracks for Adaptable Farming Needs

TRACTORS • COMBINES • GRAIN CARTS



AGRICULTURE TREAD PATTERNS



**POSITIVE DRIVE
TRACTOR TRACKS**



**FRICTION DRIVE
TRACTOR TRACKS**



**COMBINE HARVESTER
TRACKS**



**GRAIN CART
TRACKS**

The NXT Agriculture Series is GTW's newest line of agricultural rubber tracks! The NXT Agriculture Series line features rubber tracks for positive drive tractors, friction drive tractors, combine harvesters, and grain carts. Each tread pattern is tailormade to get the best performance from your machine! The NXT Agriculture Series has made major innovations to our agricultural rubber tracks, helping you Get To Work!

NXT Field Traction Treadbar

Enhanced Grip Design

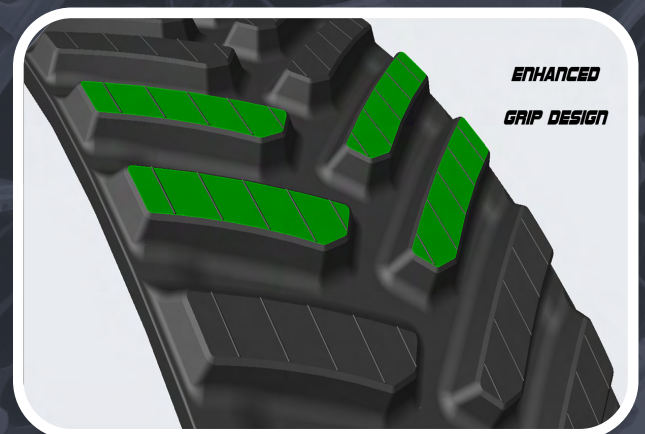
NXT Agriculture tracks feature an optimized angle tread design, that maximizes traction across various agricultural terrains, reducing slippage and enhancing grip for efficient farming operations.

High Wear Resistance

The tread bars are reinforced with a specialized NXT compound, providing a longer lifespan and maintaining performance even in the most demanding conditions.

Optimized Ground Contact

The design ensures weight distribution, reducing pressure peaks that cause soil compaction, and preserving tread height for long-term traction.



NXT Farm Drive Guide Lug

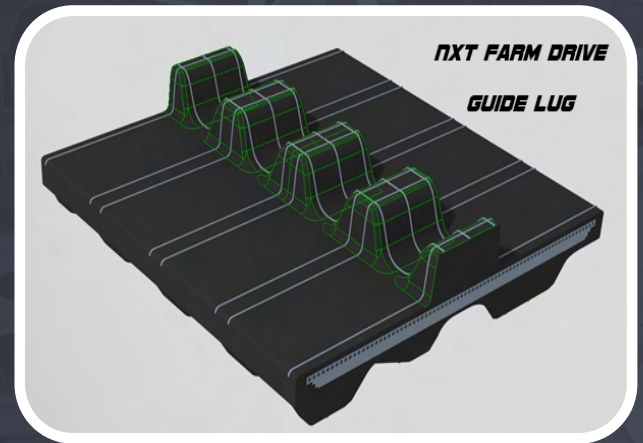


Reinforced Engagement

NXT Farm Drive Guide Lug is precision-engineered to fit OEM sprockets. This ensures a secure engagement, reducing wear and extending the life of both the track and machine. Optimized to reduce heat and scrubbing under high load and full-speed conditions, providing consistent performance in the most demanding operations.

Optimized Contact Geometry

The NXT Farm Drive Guide Lug features an optimized contact geometry that works in harmony with the wheels of the undercarriage. This design keeps the track perfectly aligned during operation, minimizing the risk of derailment and ensuring smooth performance, even during sharp turns or on uneven terrain. This innovation enhances stability and control, giving operators the confidence to tackle every agricultural task with precision and ease.



Special Anti-Chunk and Heat-Resistant Compound

The guide lugs are crafted from a specialized anti-chunk and heat-resistant compound that resists deformation under extreme pressures. This unique formula maintains the integrity of the guide lugs over time, reducing the need for frequent maintenance and ensuring that the track performs reliably across all farming conditions, even under high-temperature and abrasive environments.

NXT Core Carcass

Variable Molded Edge Technology

Carcass geometry optimized to fortify the edges, providing extra protection against cuts and abrasions during sharp turns and impacts.

Heavy-Duty Build with NXT PowerStrand Cable

Premium steel and high tensile strength materials ensure durability under heavy agricultural machinery; reinforced design to withstand high stress and loads.

Auto-Centering Bias Technology

Improved alignment during operation reducing heat in guide and drive lugs, minimizing wear, and extending the life of the track.



NXT Agricultural Series Offerings

Agco - Challenger MT700, MT800

Case IH - Quadtrac, Rowtrac, Axial Flow Combines

CAT - Challenger 35-95

Claas - Lexion Combines

Fendt - Vario 900MT and 1100MT, Ideal Combines

John Deere - 8000T, 8RT, 8RX, 9000T, 9RT, 9RX, S690, S700, and X9 Combines

Kubota - M8540, M126X

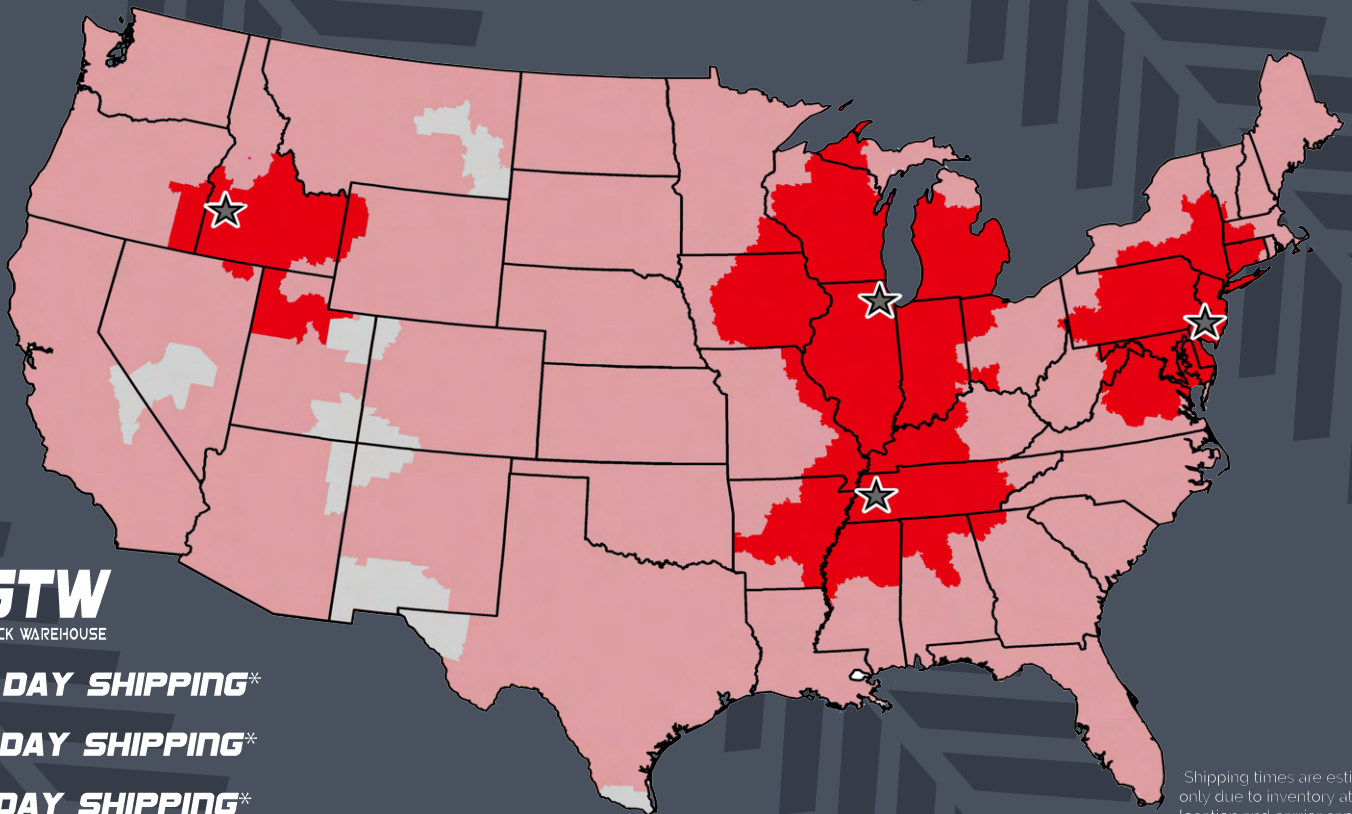
New Holland - CR and CX Combines, T8 and T9 SmartTrax

Versatile - Delta Track

Brent, J&M, and Kinze Grain Carts

GTW Shipping Map

With locations across the US, we are dedicated to decreasing downtime and getting you back to work quickly! From our agricultural, industrial, paver rubber tracks, and rubber pads, one of our locations will get your order processed and shipped out in no time! GTW headquarters is located in Bartlett, IL, with other locations in Idaho, New Jersey, and Tennessee!



1 DAY SHIPPING*

2 DAY SHIPPING*

3 DAY SHIPPING*

Shipping times are estimates only due to inventory at each location and carrier capabilities

1-847-488-0988

INFO@GLOBALTRACKWAREHOUSE.COM

Bartlett, IL | Boise, ID | Milan, TN | Pennsauken, NJ

WWW.GLOBALTRACKWAREHOUSE.COM